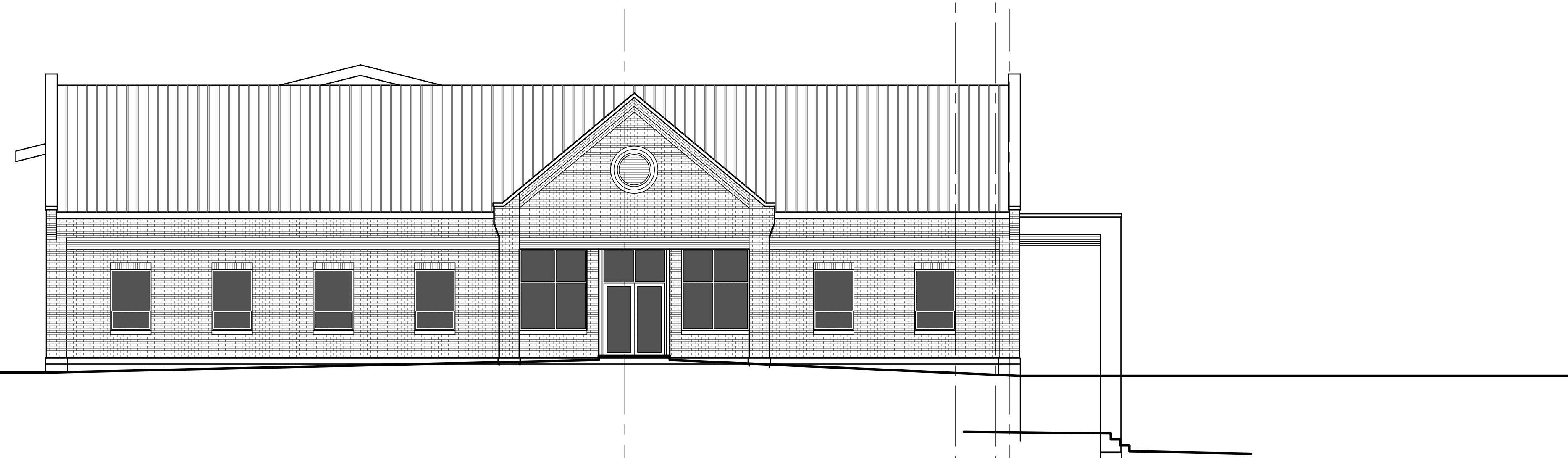


1 EAST ELEVATION
1/8" = 1'-0"



2 WEST ELEVATION
1/8" = 1'-0"

St. Patrick Catholic Church and School
PROPOSED PARISH HALL, PARISH OFFICE, AND CLASSROOM ADDITION
638 W. D Avenue - KINGMAN, KANSAS

**Hernly
ASSOCIATES**

920 Massachusetts
Lawrence, Kansas 66044
785 - 749 - 5906
FAX 785 - 749 - 1515

DRAWINGS

Date: 06/30/08
Drawn by: SCH
Checked by:
Revisions:

A3.2